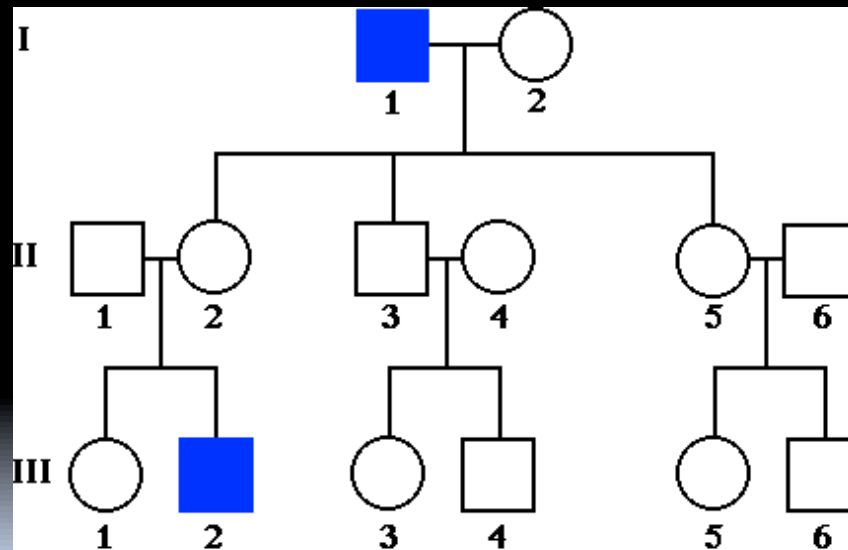



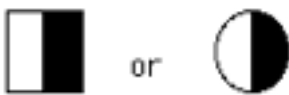

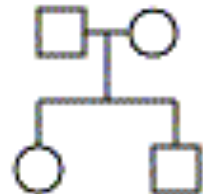


# Pedigrees- Tracing Traits through Generations

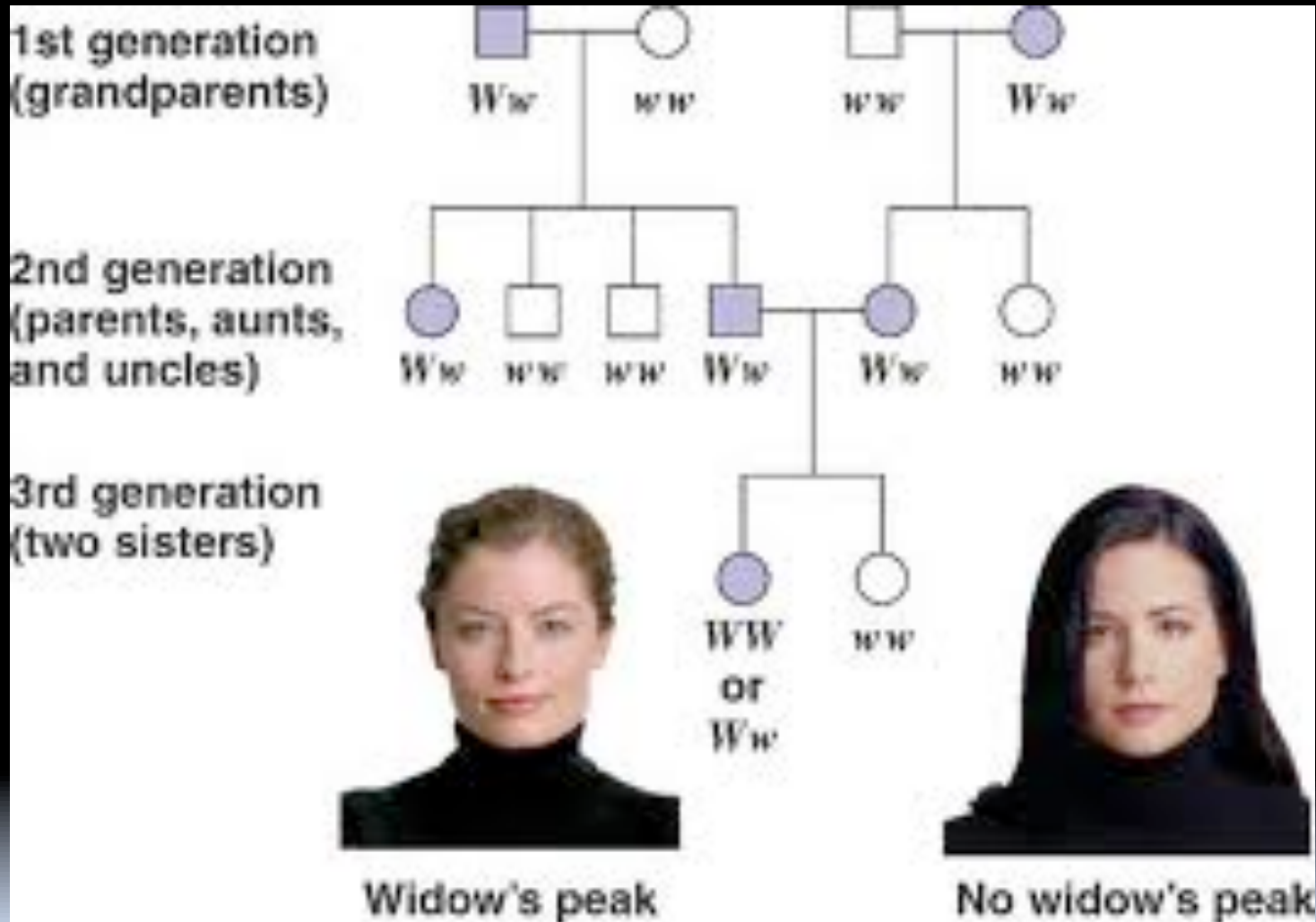
- Geneticists often need to map inheritance of genetic traits and diseases from generation to generation.
- A **pedigree** is a graphic representation of genetic inheritance.



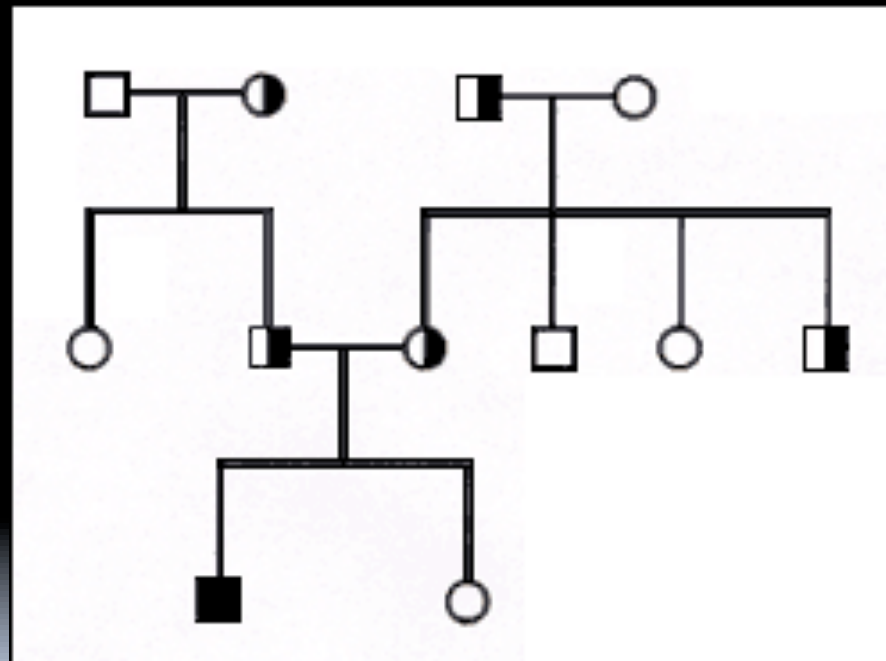
# Pedigree Key

Female 	Male 	Affected Individual 
Carrier 	Marriage 	Offspring 

Each horizontal row is a generation.



- A carrier is a person who has a recessive gene for a particular trait (they do not express the trait, but can pass it on).



# Dominant or Recessive Pedigree?

- If 2 affected people have an unaffected offspring, it is Dominant
- If 2 unaffected people have an affected offspring, it is Recessive
- If every affected person has an affected parent, it is Dominant

